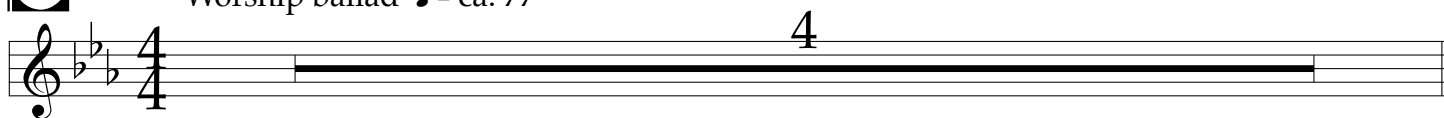


Christus Victor (Amen)

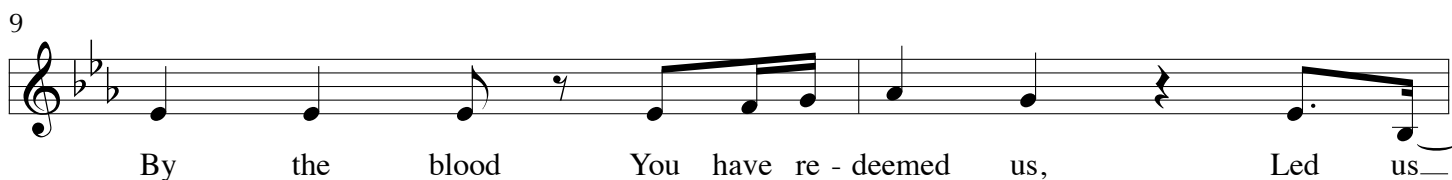
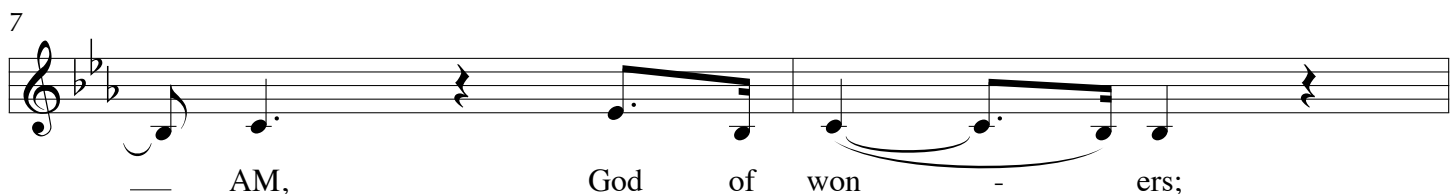
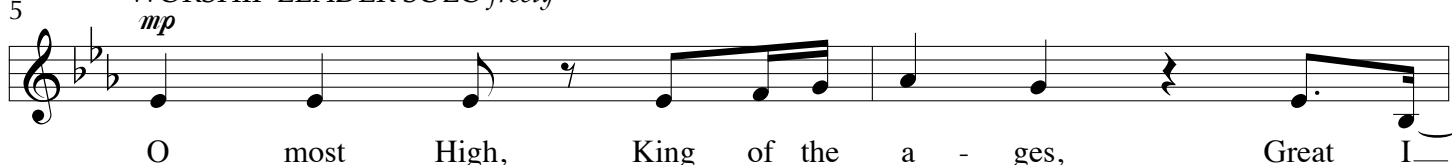
Words and Music by
MATT PAPA, MATT BOSWELL,
BRYAN CHRISTOPHER FOWLER,
KRISTYN GETTY and KEITH GETTY

Arranged by Jay Rouse

49 0:00 Worship ballad ♩ = ca. 77



5 WORSHIP LEADER SOLO *freely*



56

CHOIR *unis.*
W. L. *con't on melody*
mf

15

Now to the Lamb up - on the throne, —

17

Be bless - ing, hon - or, glo - ry, pow - er; For the bat - tle You have _

19

— won, Hal - le - lu - jah, a - men.

22

51 1:08

25

Opt. W.L. con't on melody freely
mf

O most High, dwell - ing a - mong us, Son of _

27

— man, sent for sin - ners;

29

By Your blood You have re - deemed us, Spot - less_

31

— Lamb, might - y Sav - ior; Who

33

52 1:39

lived, Who died, Who rose vic - tor - 'ous.

35

f Now to the Lamb up - on the throne,

37

Be bless - ing, hon - or, glo - ry, pow - er; For the bat - tle You have_

39

won, Hal - le - lu - jah.

41

With ev - 'ry tribe and ev - 'ry tongue_

43

We join the an - them of the an - gels in the tri - umph of the_

45

Son; Hal - le - lu - jah, a - men.

48 53 2:29

mp O most High, King of the

52

na - tions, Robed in praise, crowned in

54 *mf*

splen - dor; On that day who will not

56

trem - ble When You stand Christ the Vic - tor Who

59 54 3:01

was, and is, and is for - ev - er?

60

61 *f*

Now to the Lamb up - on the throne, —

f

Detailed description: This system contains measures 61 and 62. The music is in a 7/4 time signature with a key signature of one flat. The melody in the treble clef starts with a quarter rest, followed by a quarter note G4, and then a series of eighth notes: A4, B4, C5, B4, A4, G4, F4, E4. The bass line consists of a series of chords: G2-B2, A2-C3, B2-D3, C3-E3, D3-F3, C3-E3, G2-B2. The lyrics are "Now to the Lamb up - on the throne, —". A dynamic marking of *f* is present at the beginning and in the bass line.

63

Be bless - ing, hon - or, glo - ry, pow - er; For the bat - tle You have —

Detailed description: This system contains measures 63 and 64. The melody continues with eighth notes: D4, C4, B3, A3, G3, F3, E3, D3. The bass line continues with chords: D3-F3, C3-E3, B2-D3, A2-C3, G2-B2, F2-A2, E2-G2, D2-F2. The lyrics are "Be bless - ing, hon - or, glo - ry, pow - er; For the bat - tle You have —".

65

won, Hal - le - lu - jah.

Detailed description: This system contains measures 65 and 66. The melody has a quarter rest, followed by a quarter note G4, and then a half note G4. The bass line has a quarter rest, followed by a quarter note G2, and then a half note G2. The lyrics are "won, Hal - le - lu - jah.". There are large oval markings over the final notes of both staves.

67

With ev - 'ry tribe and ev - 'ry tongue —

Detailed description: This system contains measures 67 and 68. The melody continues with eighth notes: A4, B4, C5, B4, A4, G4, F4, E4. The bass line continues with chords: G2-B2, A2-C3, B2-D3, C3-E3, D3-F3, C3-E3, G2-B2. The lyrics are "With ev - 'ry tribe and ev - 'ry tongue —".

69

We join the an - them of the an - gels in the tri - umph of the —

Detailed description: This system contains measures 69 and 70. The melody continues with eighth notes: D4, C4, B3, A3, G3, F3, E3, D3. The bass line continues with chords: D3-F3, C3-E3, B2-D3, A2-C3, G2-B2, F2-A2, E2-G2, D2-F2. The lyrics are "We join the an - them of the an - gels in the tri - umph of the —".

71 55 3:44

dim.

Son; Hal - le - lu - jah, a - men.

dim.

74

mp

A - men, a - men,

mp

77

mf

a - men. A - men,

mf

80 56 4:09

a - men, a - men.

62

83

f

A - men, a - men, a -

57 4:25

86

men, a - men!

88

ff

Now to the Lamb up - on the throne, -

90

Be bless - ing, hon - or, glo - ry, pow - er; For the bat - tle You have -

92

won, Hal - le - lu - jah!

94

With ev - 'ry tribe and ev - 'ry tongue

96

We join the an - them of the an - gels in the tri - umph of the

98

— Son; Hal - le - lu - jah, a - men! Sing the

101

vic - t'ry of the Lamb. Hal - le - lu - jah,

The image shows a musical score for two staves, likely piano accompaniment. The top staff is in treble clef and the bottom staff is in bass clef. Both staves have a key signature of one sharp (F#). The music consists of four measures. The first measure contains a quarter note chord (F#4, A4, C5) in both staves. The second measure contains a quarter note chord (F#4, A4, C5) in both staves. The third measure contains a half note chord (F#4, A4, C5) in both staves. The fourth measure contains a half note chord (F#4, A4, C5) in both staves. The lyrics 'a - men!' are written below the staves, with 'a' under the first measure, '-' under the second measure, and 'men!' under the third measure. The word 'men!' is followed by a horizontal line extending to the right. The music ends with a double bar line at the end of the fourth measure.